

Use Your Mouse

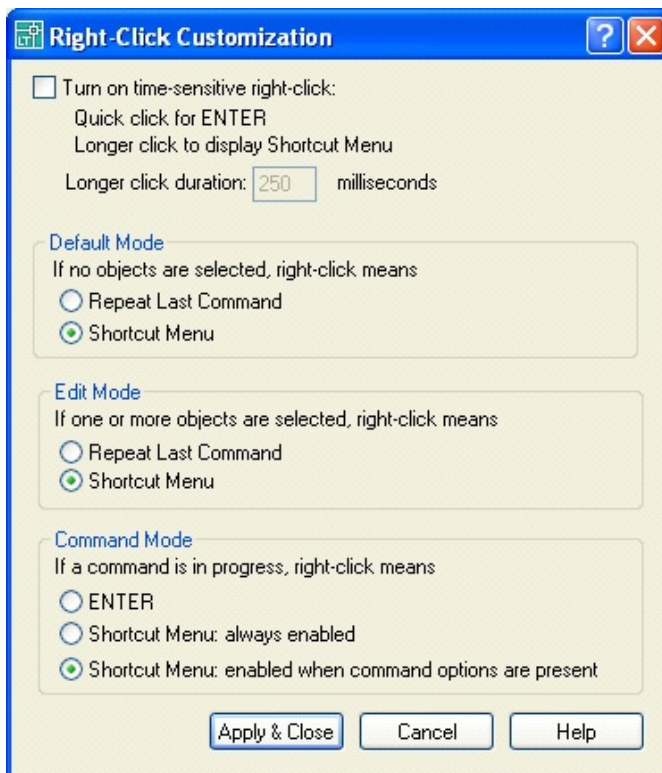
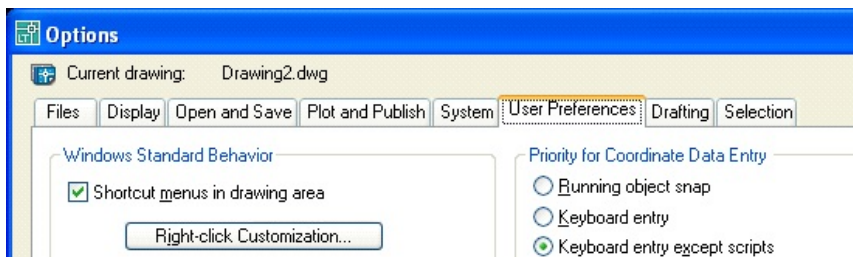
IN THIS GUIDE

This guide explains how to set the default action of the right mouse button to display a shortcut menu in AutoCAD. In previous releases of the software, pressing the right mouse button would initiate a RETURN. As this can be achieved by pressing ENTER or the SPACEBAR on the keyboard the right mouse button can be put to better use.

Setup Right-click Customization

By default, when you click the right mouse button, a dialogue box containing multiple selections is displayed. However, in previous releases of the product, you could click the right mouse button instead of pressing the ENTER key.

To change the default behaviour of the right mouse button type OP to launch the Options dialogue box and choose the User Preferences tab. Click on the Right-click Customization button to reveal settings.



Under Default Mode, select shortcut menu.

Under Edit Mode, select shortcut menu.

Under Command Mode, select shortcut menu: enabled when command options are present.

Choose the Apply & Close button.

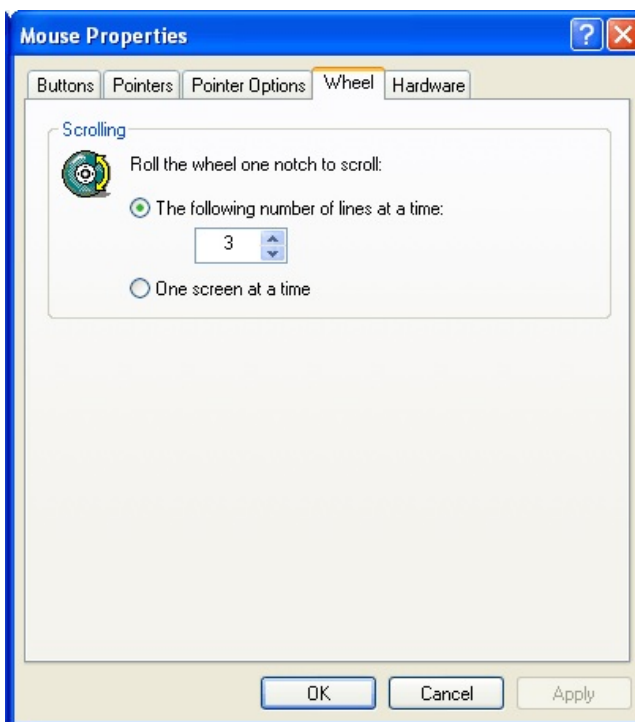
For those die hard fans of right click = enter, try selecting the quick click for enter option by selecting Turn on time-sensitive right-click.

Mouse Wheel Settings

You can use the mouse wheel to zoom in a drawing without using software commands and scroll in dialogue boxes without using scroll bars. The zoom percentage and scroll value for the mouse wheel can be adjusted.

To adjust the zoom percentage, change the value of the ZOOMFACTOR system variable. The initial value of ZOOMFACTOR is 10 (range 3-100). The value represents the percentage change in zoom level for each increment of wheel rotation. A ZOOMFACTOR of 10 will zoom by 10 percent for each increment of wheel rotation.

The scroll value can be adjusted in Windows Control Panel too.



In Windows Control Panel, double-click the Mouse program icon. Select the Mouse Properties dialogue box and choose the Wheel tab.

Available settings may vary; they depend on the make of the mouse and the mouse driver.

Common Issues

Issue: The wheel button on the mouse does not perform any zoom functions.

Try the following troubleshooting steps:

1. Verify that the MBUTTONPAN system variable is set to 0.
2. Try restoring a valid acad.mns menu file from the installation AutoCAD CD.
3. Update the mouse driver from the manufacturer's website.

Issue: Dynamic zooming is not default functionality of a Wheel Mouse.

Try the following troubleshooting steps:

1. Check the mouse icon in the Windows Control Panel to see if there are any settings for the wheel. If there are, turn off the settings.
2. Check to see that there are no other mouse utilities (For example, Logitech has a Logimouse utility) overriding the settings for the mouse wheel. If there are, turn them off.
3. If dynamic zooming works in other applications, press the CTRL key while rolling the wheel.
4. Update the mouse driver from the manufacturer's website.

Issue: Toolbar buttons have to be selected more than once to execute a command.

Try the following troubleshooting steps:

1. In Windows Control Panel, decrease the pointer speed. The name of this setting varies, depending on the version of Windows you are using.
2. Check to see that there are no other mouse utilities (For example, Logitech has a Logimouse utility) overriding the settings for the mouse wheel. If there are, turn them off.

Issue: You are not able to pan or zoom in the current view with a wheel mouse.

Certain commands are not available when a drawing is displayed in perspective view mode. The zoom and pan operations in perspective view are some of commands that are not allowed. Although this behaviour is as designed, this may not be apparent because the message that is displayed on the status bar stating: Cannot real time pan or zoom. Regenerate the drawing.

You can pan and zoom using the mouse wheel by turning off the perspective mode for the current view. There are two ways to do this:

1. Enter 3dorbit on the command line. Right-click on the screen, and click Projection > Parallel on the shortcut menu.
2. Enter dview on the command line. Select OFF. Press ENTER twice to exit the command.